

>	
2014	>
annual report	
	>

airport department

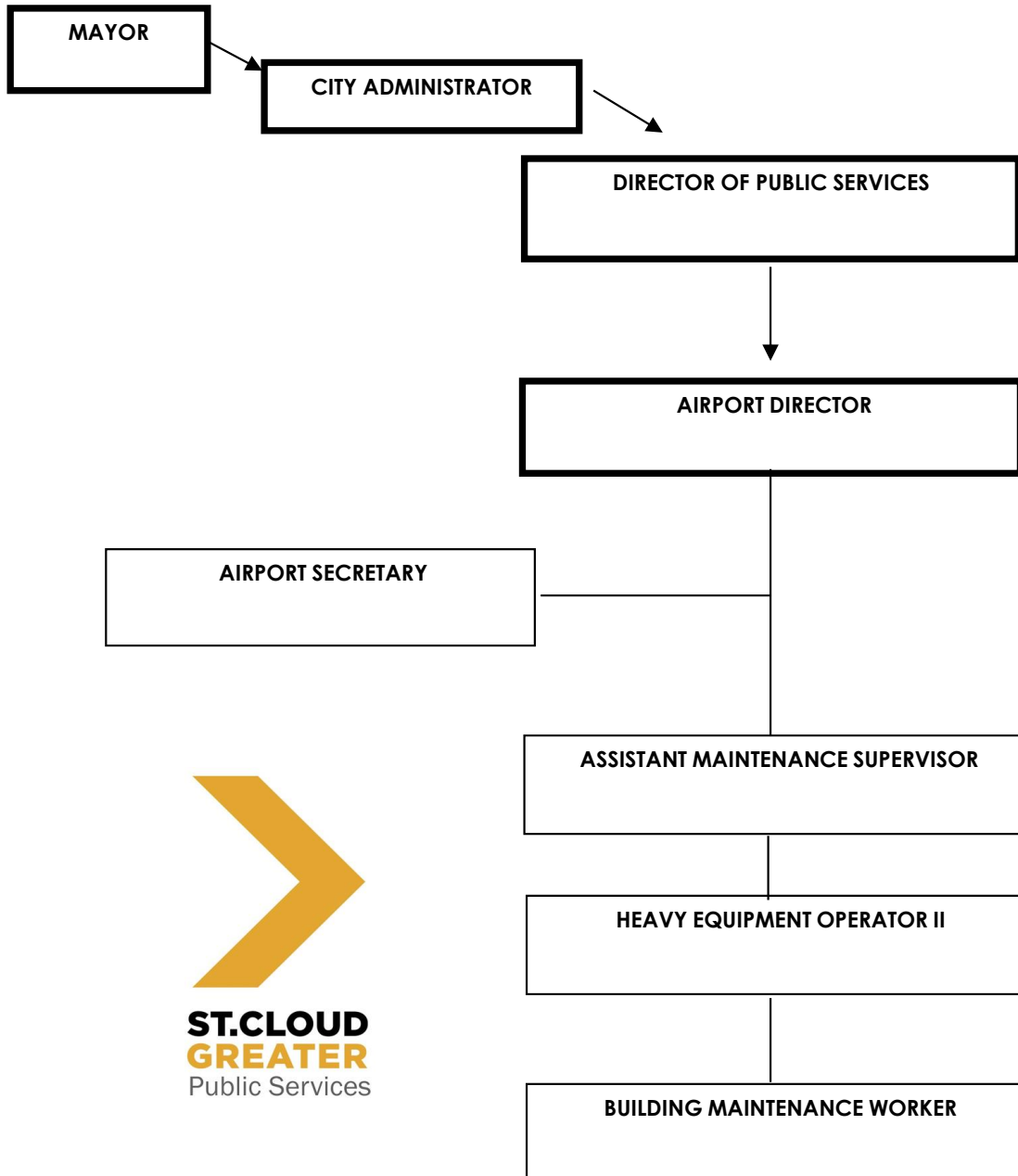


CITY OF
ST. CLOUD
MINNESOTA



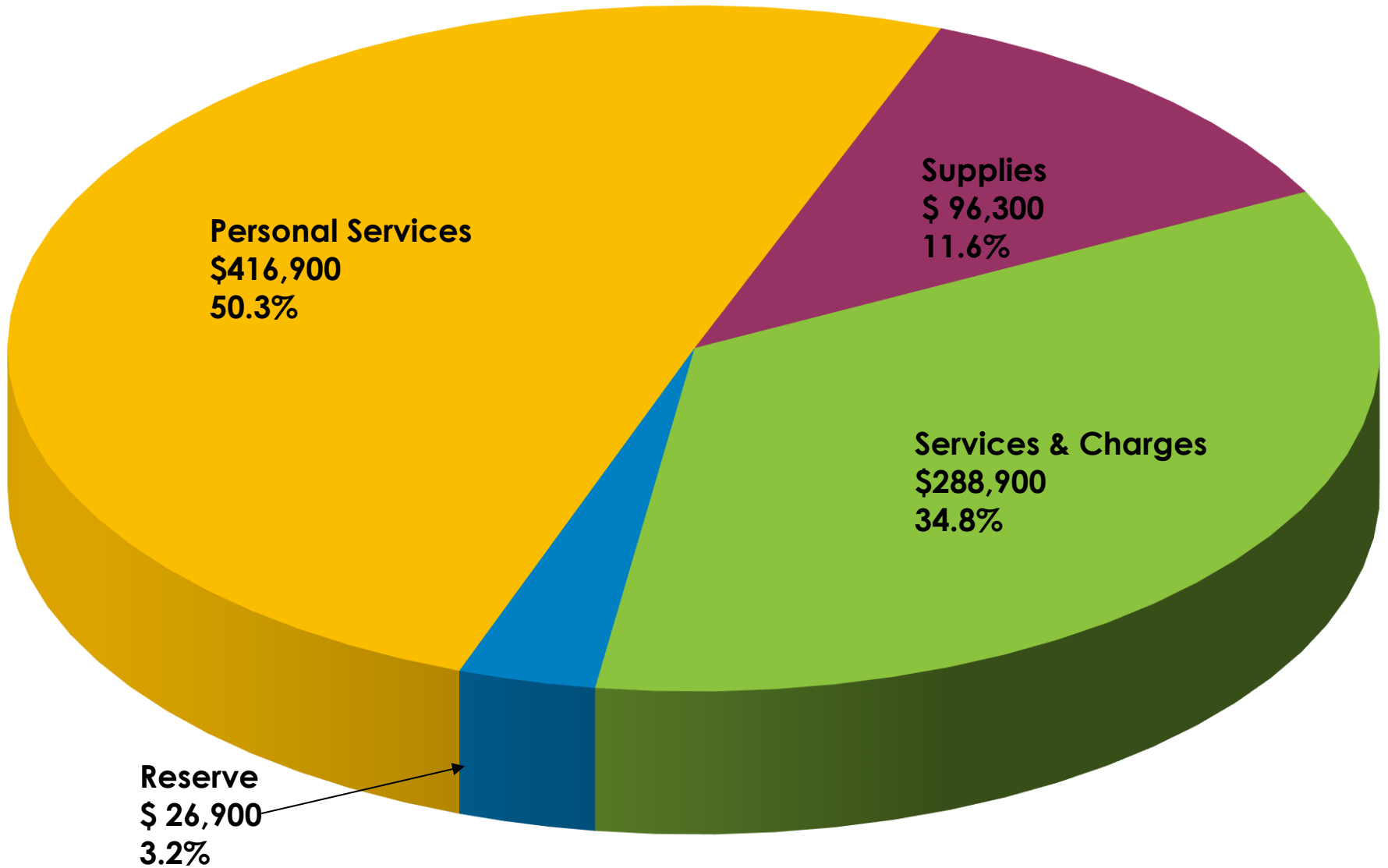
PUBLIC SERVICES SECTION

AIRPORT DEPARTMENT



**ST.CLOUD
GREATER**
Public Services

2014 AIRPORT BUDGET
\$829,000



AIRPORT DEPARTMENT CONTACT INFORMATION

ST. CLOUD REGIONAL AIRPORT

1550 45th Avenue Southeast

St. Cloud, MN 56304-9535

Phone: (320) 255-7292

Fax: (320) 650-3255

Website: www.stcloudairport.com

E-mail: Airport@ci.stcloud.mn.us



AIRPORT STAFF

William P. Towle

Airport Director

Tom Heurung

Assistant Maintenance Supervisor

Lynn Hoff

Airport Secretary

Randy Weiman

Heavy Equipment Operator II

Jim Thell

Building Maintenance Worker

VEHICLE AND EQUIPMENT INVENTORY

<u>UNIT NO.</u>	<u>DESCRIPTION</u>	<u>MODEL YEAR</u>
750	Chevrolet 1 Ton Pickup	2007
751	Chevrolet 1/2 Ton 4x4 Pickup	2006
752	Mack Truck – 4 wheel drive	1984
752A	Snow Plow, Wing & Hitch	1984
752B	V-Box Sander	2001
753	International Plow Truck	1998
753A	Falls Snow Plow w/accessories	1998
754	SMI Snow Blower	1979
755	Ford Explorer	2000
756	Oshkosh Multi-Purpose Truck	2002
756A	Oshkosh Blower Attachment	2002
756B	MB Broom Attachment	2002
757	Oshkosh Truck	2002
757A	Wausau Plow with Accessories	2002
758	Oshkosh Multi-Purpose Truck	2005
758A	Oshkosh Blower Attachment	2005
758B	MB Broom Attachment	2005
759	Premier Deicer Truck	2007
760	John Deere Tractor	2007
760A	John Deere Loader	2007
760B	John Deere Rotary Mower 15 Ft	2007
762	New Holland Tractor	2001
762A	New Holland Loader	2001
762B	Diamond Mower Attachment	2001
762C	Snowblower 108" Attachment	2003
763	Caterpillar Loader	2011
765	John Deere Mower 72"	2007
765A	John Deere Blower 60"	2007
765B	John Deere Broom 60"	2007
767	Honda ATV	2001
777	Oshkosh High Speed Blower	2012
770	Generator, Standby (Generac)	1995
772	Generator, Standby (CAT)	2001
774	Generator, Standby (Katolite)	2004
01	ARFF Fire & Rescue Vehicle	1997
02	ARFF Fire & Rescue Vehicle – Striker	2003

AIRPORT ADVISORY BOARD

Members of the St. Cloud Regional Airport Advisory Board are appointed by the City Council for a three year term. Current board members are:

Members

Roger Bonn	Chairperson
Marc Ree	Vice-chairperson
Dr. Steve Anderson	Secretary
Dr. Mahesh Kumar	Board Member
Open	Board Member
Ken Raiber	Board Member
Mike Salaski	Board Member

City, County & Township Liaisons

Kathy Sims	Haven Township Liaison
Jake Bauerly	Benton County Commissioner Liaison
Spencer Buerkle	Alternate Benton County Commissioner Liaison
Felix Schmiesing	Sherburne County Commissioner Liaison
Bruce Anderson	Alternate Sherburne County Commissioner Liaison
Leigh Lenzmeier	Stearns County Commissioner Liaison

Meetings are held monthly on the second Monday. Special meetings are scheduled at the request of the Chairperson.

AIRPORT OPERATIONS

The Airport Director and staff are employees of the City of St. Cloud and supervise daily operations. Airport staff includes the Airport Director, Assistant Maintenance Supervisor, Heavy Equipment Operator II, Airport Secretary, Airport Operations and Maintenance, and Building Maintenance Worker. Part-time employees are hired to assist with snow removal.

The following pages detail Airport operations during 2014. The information is compiled from billings, records from Airport tenants, information provided by the Minnesota Department of Transportation Office of Aeronautics and the Federal Aviation Administration (FAA).

ST. CLOUD REGIONAL AIRPORT



The St. Cloud Regional Airport (STC) is owned and operated by the City of St. Cloud. Covering 1,400 acres, Airport features include two intersecting runways, associated taxiways, airline terminal and support area, Airport Rescue & Fire Fighting (ARFF) Facility, two Fixed Based Operators (FBOs), St. Cloud Aviation and Wright Aero, and an Air Traffic Control Tower. The Airport T-Hangar Area serves as the main facility for field maintenance operations and the 74 city-owned T-hangars bays which are leased to individuals, with the exception of the St. Cloud State University Aero Club and one private hangar. The private hangar was built and donated to the City of St. Cloud.

The St. Cloud Regional Airport is classified as a Transport Category Airport by the Federal Aviation Administration (FAA) and is certified under Part 139 of the Federal Aviation Regulations (FAR) – Certification of Airports. Federal Aviation Regulation Part 139 describes FAA rules and requirements for airports serving scheduled air carriers with aircraft seating of nine or more passengers; STC qualifies as a Minnesota primary air carrier airport.

At any given time there are approximately 100 people working for the multiple tenants at STC, which includes the Army Aviation Support Facility. The Airport is vital to development and economic growth in the City of St. Cloud and surrounding communities. According to a recent economic impact study, STC generates approximately \$20 million in annual economic impact for the area.

The Airport has a fuel farm consisting of two underground tanks; 12,000-gallon capacity each. One tank has jet-A fuel; the other 100 low-lead fuel. There are also three above-ground steel tanks for unleaded gasoline, on-road diesel and off-road diesel.

Navigational aids on the airfield include precision & non-precision landing aids and lighting systems. Runway 13-31 has high intensity runway lights (HIRL's) and Precision Approach Path Indicator (PAPI's) lights. Both Runway 31 & 13 have a precision Instrument Landing System (ILS) with a Medium Intensity Approach Lighting System and Runway Alignment Indicator Lights (MALSR). Non-precision landing aids on Runway 13-31 include VHF omnidirectional radio range (VOR), distance measuring equipment (DME), and non-directional beacon (NDB) approaches to each end of the runway. Runway 5-23 has medium intensity runway lights (MIRL) and a non-precision global positioning system (GPS) approach to each runway end. Runway 13-31 has future capability for in-pavement lighting. The Airport also has a beacon, compass rose and lighted windsock with a segmented circle.

An Airport Surface Observation System (ASOS) provides 24-hour, up-to-the-minute weather observations which are maintained by the National Weather Service.

The Army Aviation Support Facility is located at STC. The National Guard's 80,000 sq. ft. building/hangar is home to six Blackhawk and six Chinook Helicopters, and has more than 60 full time employees.

AIRPORT SERVICES

Objectives:

Airport Services administers daily airport operations and tenant facilities to ensure all City, Federal Aviation Administration (FAA), and MN Department of Transportation – Office of Aeronautics rules, regulations and ordinances are met. Airport services is responsible for developing, implementing and maintaining airport master plans and five-year Capital Improvement Programs to ensure City and Regional short and long-term airport goals are met. Other objectives include pursuing additional tenants to improve public services and generate additional revenue, and to provide ongoing improvement to the safety and appearance of airport property and grounds.

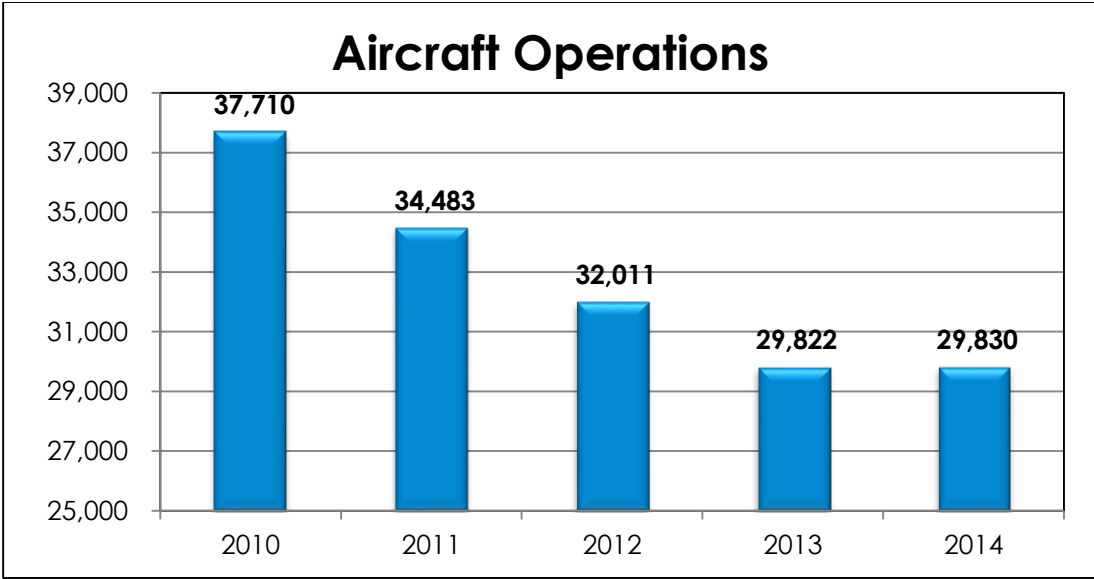
Description of Services and Programs:

The Airport Department is responsible for operating and maintaining a safe, secure and user-friendly aviation facility that meets Federal and State requirements for airports with scheduled, charter and general aviation air service. The Department is also responsible for the planning and development of airport facilities to meet future aviation demands.

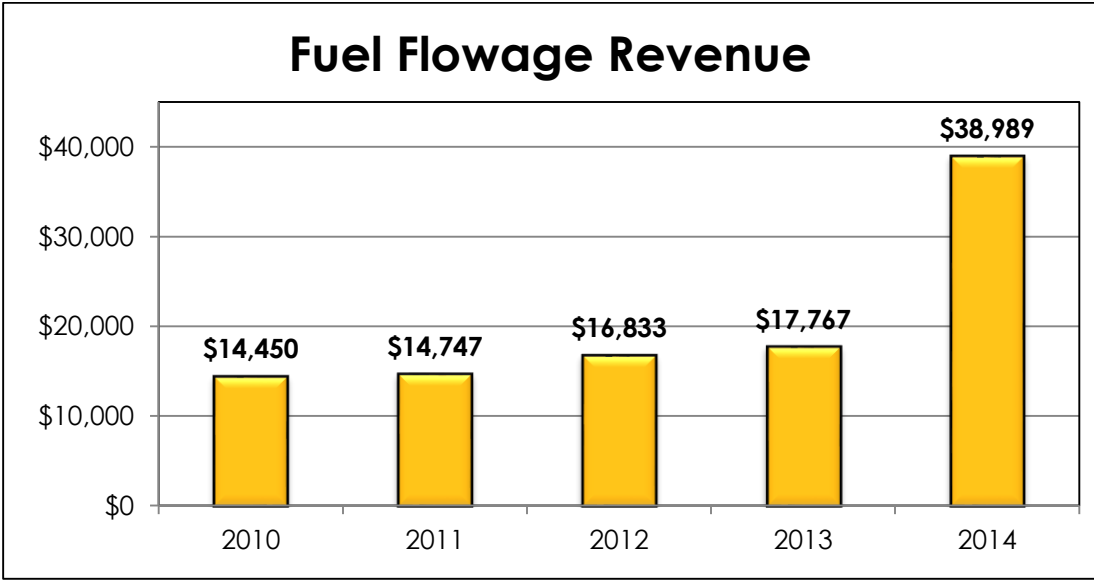
Responsibilities include indoor and outdoor maintenance of the St. Cloud Regional Airport including lighting systems, snow removal, ice control and grounds keeping. City staff also maintains the buildings including the air traffic control tower, airline terminal, aircraft hangars, fire station and maintenance building. Administrative responsibilities include Master Planning, managing leases and contracts for airport tenants, and compliance with Federal Aviation and State Regulations for a commercial service airport. Staff is committed to providing safety/security protection and fire/emergency response at the Airport.

Highlights in 2014:

The St. Cloud Regional Airport (STC) was successful in attracting SkyWest Airlines d/b/a United Airlines to begin service in 2014. They began twice daily service to Chicago O'Hare International Airport using CRJ-200 aircraft; a 50-passenger jet. Projects completed include runway reconstruction and a new large, multi-plane storage hangar. The 05-23 runway reconstruction project consisted of milling the old asphalt, excavating the sub-grade, installing new sub-grade and paving with five (5) inches of new asphalt. The new multi-plane storage hangar is 12,000 square feet and will be used by the Fixed Base Operator (FBO) for large corporate jet aircraft.



Aircraft operations indicate Airport usage; the information is used by the FAA for funding consideration.



A fee is added to the price of fuel sold to Airport users. The fee is used for maintenance and capital improvements.